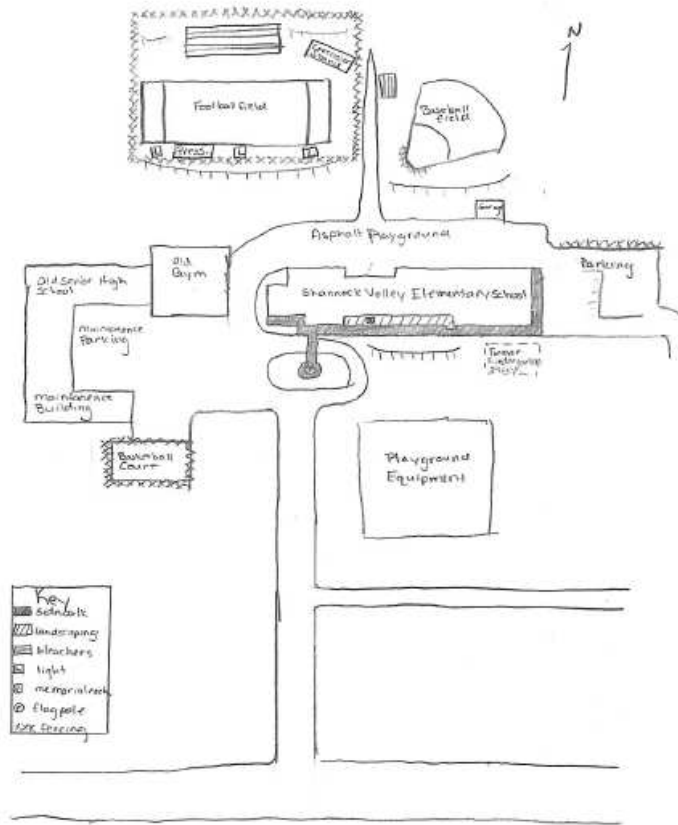
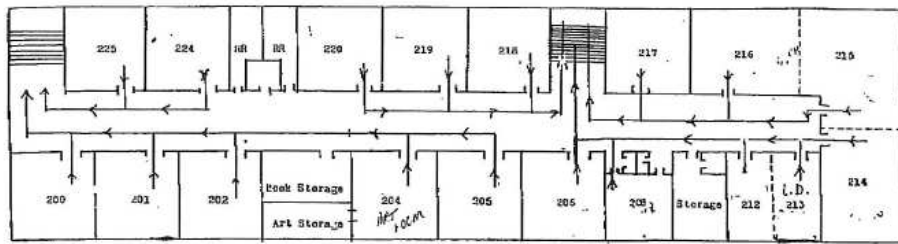


150041 – Shannock Valley Elementary





Site Plan for Shannock Valley Elementary

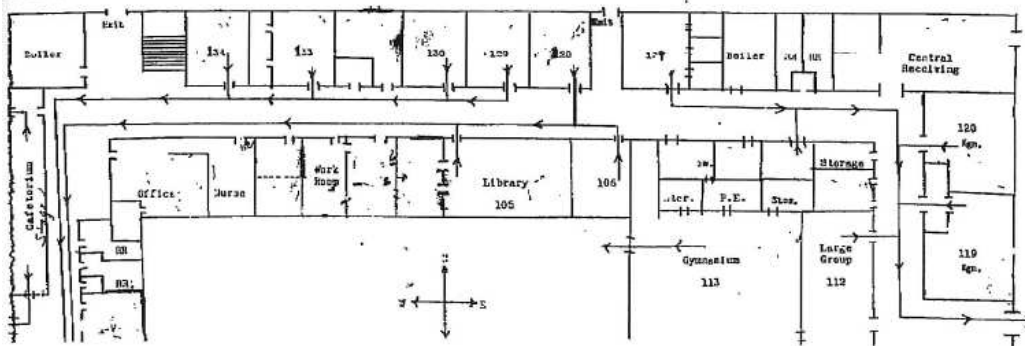


Building Evacuation Plan
Shannock Valley Elementary School

150041

First Floor

Rural Valley Borough, Armstrong County



Floor Plan of Shannock Valley Elementary

150041; Shannock Valley Elementary School. This school is located off of School Street W., Rural Valley, Pennsylvania in Rural Valley Borough, Armstrong County. It is part of the Armstrong School District. The 1963 school building is located at the end of a driveway off of School Street W. behind properties located along the main roadway. The elementary school is part of a complex that originally included a senior high school and separate gymnasium. These have been converted to a maintenance complex. A basketball court enclosed by fencing is located south of the maintenance complex. The elementary school is situated to the east of the maintenance complex, behind a circular driveway surrounding a grassy island with a flag pole and armed services memorial. South of the school building is a playground with a mix of 1960s and modern playground equipment. North of the school is a paved play area and, beyond, a football field with bleachers, a press box, and concession stand, and a baseball field. Maintenance garages that appear to date to the construction of the school are also located north of the school. East of the school is a two-tiered parking lot that appears to date to the mid-1970s when an addition was constructed on the east end of the elementary school. A kindergarten play area has been removed from the southeast corner of the school.

The 1963 core of the school is a two-story structure arranged along linear interior hallways lined on either side by classrooms. A cafetorium is located at the west end of the school. A library is located towards the east end of the core. An addition, constructed ca. 1972-74, is appended to the east end of the school. Its construction materials and design are similar to the original structure. The structure has brick and porcelain enameled steel curtain walls. A flat roof is covered with rubber membrane. The building has a brick exterior chimney. The main entrance to the school contains a pair of metal-frame glass double doors surrounded by fixed windows. The entrance is sheltered by a steel overhang. The school is lit by picture and awning windows.

A second set of double doors forms a vestibule in the school's main entryway. Above the second set of doors is a decorative transom of metal latticework and single-pane windows. The entryway features a combination of brick and plaster walls, acoustic ceiling tiles, terrazzo floor tiles, and hanging light fixtures. A cafetorium features plaster and tiled walls, acoustic ceiling tiles, fluorescent lights, ceiling fans, vinyl floor tiles, and tables which fold out from the walls and have their own seats. An unused inset stage in one wall of the room is surrounded by wood panels. The gymnasium features a tiled floor, acoustic ceiling tiles, fluorescent lights, concrete-block and tiled walls, wall-suspended basketball hoops and a suspended screen divider. Original shower rooms are now used for storage. An old coat room is now used as a speech room.

Shannock Valley Elementary School was constructed by the State Public School Building Authority in 1963 under the name "Shannock Valley Union Elementary School." It was part of an educational complex that included a senior high school, separate gymnasium, and assorted maintenance structures. The latter buildings have since been converted to a maintenance complex. An addition to the elementary school ca. 1972-74 included a gymnasium and classrooms.

1967 Aerial Photograph ASJ-2HH-25. Created on September 11, 1967. On file at the Pennsylvania State Archives, Record Group 31, Records of the Department of Commerce, State Planning Board Collection.

United States Geological Survey

1990 *Rural Valley, PA Quadrangle*. 7.5 minute series. Topography by photogrammetric methods from aerial photographs taken 1966 and 1967. Field checked 1969. Photoinspected 1990. Denver, CO or Reston, VA.

1993 *Rural Valley SW, PA Aerial Photograph*. USGS Reference Number 40079-G3-04-PHT. Created on April 11, 1993.



Aerial View of Shannock Valley Elementary

More Photos of Shannock Valley Elementary School

